

Cantilever driveway gates are far superior to rolling track systems. The gate never jumps off the track, because there is no track.

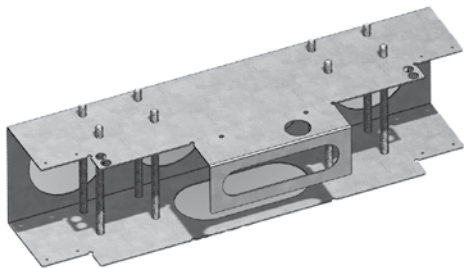
Gate Companies recommend Cantilever gates for their reliability. The gate never touches the ground, and it doesn't have a track that could get damaged or dirty causing the gate to jump off. Even if the driveway has a slope or is uneven in any way the gate stays perfectly level. Always!

Cantilever gates are preferred by architects because they don't need a track across the driveway. The gate doesn't touch the driveway at all.

Users appreciate the smooth super-quiet operation and superior reliability over track systems.

Slab Models:

| Code | Gate |
|--------|----------------------|
| SLAB-R | 4m/200kg or 3m/300kg |
| SLAB-J | 4m/120kg or 3m/150kg |



The Slab makes cantilever systems possible on projects with a modest budget. The Slab dramatically reduces your installation time and visits to site by acting as a single platform to mount motor and carriage wheels plus strengthens the concrete foundation.

Pour the foundation concrete around our engineered galvanised steel Slab. When the concrete is set just bolt the wheel-carriages and motor down, slide the gate on and the job is done. Perfect gate alignment for the life of the gate.

Hardware & Automation

| Code | Description |
|------------|---|
| CGS-150KIT | BASIC KIT 2x 3m Track or 1x 6m track 2x 5-wheel carriages 1x end cup 1x end wheel |

Options

| | | |
|---------|---------------------------------|-------------------|
| CG-9728 | Top guide with bearing rollers | (Flat top gates) |
| CG-9764 | Side guide with bearing rollers | (Spear top gates) |

Suggested Automation and Access Control

| | |
|--------------|--|
| ASL-700PRO | Automation Kit |
| ASL-700PROSP | Automation Kit (external transformer) |
| AR-6FPNRUP | 1m Nylon Rack (total m = opening width + 1m extra) |
| AAC-VIDEOINT | Video Intercom with gate control |
| AAC-KEYPAD | Hardwired Keypad with decoder |

Gate Design Recommendations

Gate frame size
Using a bottom tube the same size as the monorail provides a more secure mount for the gear rack. Use 75x75 (3mm thickness) SHS for the bottom of the gate and 75x50 or 50x50 for the top of the gate.

Tail Size
Gate tail needed for Slab-J is 850mm and for Slab-R it's 1150mm.

Slab Selector

Length = Driveway opening only not the tail
Weight = Total weight including gate.

