

— STEP 11 —

⚠ This user guide should be stored and handed to all users of the automation.

11.1 – WARNINGS

● Keep at a safe distance from the moving door until it is completely open or closed; do not transit through the door until it is completely open and has come to a standstill. ● Do not let children play near the door or with its commands. ● Keep the transmitters away from children. ● Suspend the use of the automation immediately as soon as you notice something abnormal in the operation (noises or jolting movements); failure to follow this warning may cause serious danger and accidents. ● Do not touch moving parts. ● Regular maintenance checks must be carried out by qualified personnel according to the maintenance plan. ● Maintenance or repairs must only be carried out by qualified technical personnel. ● Send a command with the safety devices disabled:

If the safety devices do not work properly or are out of order, the door can still be operated.

01. Command the door with the transmitter. If the safety devices give the enable signal, the door opens normally; otherwise, reattempt within 3 seconds and keep the control activated. **02.** After approximately 2 seconds the door will start moving in the “man present” mode, that is, so long as the control is kept activated the door will keep moving; as soon as the control is released the door will stop.

If the safety devices are out of order, arrange to repair the automation as soon as possible.

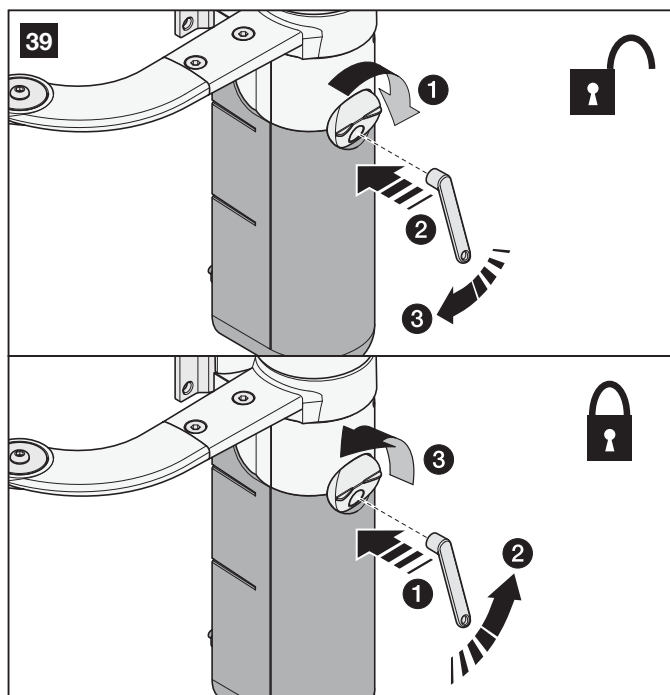
11.2 – Manually releasing and locking the gearmotor

The gearmotor is equipped with a mechanical system that enables manual opening and closing of the gate. These manual operations must be performed in the event of a power failure, malfunctions or during the installation phases.

Note - In the event of a power failure, the gate may be powered by the backup battery PR200, if present on the system.

To release the gearmotor manually, refer to **fig. 39** and proceed as follows.

- 01.** Rotate the release disk clockwise through 90°, to expose the release pin.
- 02.** Insert the key supplied in the release pin.
- 03.** Turn the release key clockwise through nearly one complete turn.
- 04.** The gate leaf can now be moved manually to the required position.
- 05.** To restore automatic operation, turn the key anticlockwise in the release pin and manually move the gate until you can hear the leaf mechanically engage with the drive mechanism.
- 06.** Then remove the key from the release pin and turn the release disk anti-clockwise through 90° to cover the hole.



In the event of a gearmotor fault, it is still possible to try release the motor to check whether the fault lies in the release mechanism.

11.3 – Door Control

• **With radio transmitter**

The command associated to each button depends on how it has been memorised.

11.4 – User-admissible maintenance operations

The operations that the user must carry out periodically are listed below:

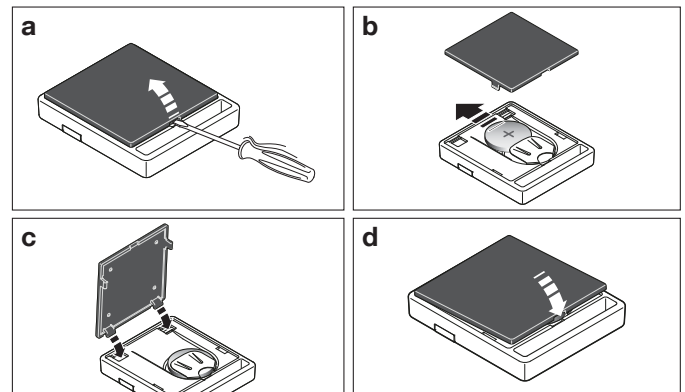
- **Cleaning of the surfaces of the devices: use a slightly damp (not wet) cloth. Do not use substances containing alcohol, benzene, thinners or other flammable substances; the use of these substances may damage the devices and cause fires or electric shocks.**
- **Removal of leaves and stones: disconnect the power supply before proceeding, so as to prevent anyone from moving the door.**

11.5 – Replacing the transmitter battery

When the battery is flat, the transmitter capacity is significantly reduced. If, when a button is pressed, the relevant Led turns on then immediately fades and turns off, it means that the battery is completely flat and should be immediately replaced.

If instead the Led turns on only for a moment, it means that the battery is partially flat; the button must be kept pressed for at least half a second for the transmitter to attempt to send the command.

However, if the battery level is too low to complete the command (and possibly wait for the response), the transmitter will turn off and the relevant Led will fade. In these cases, normal transmitter operation can be restored by replacing the battery with another of the same type, while observing the relevant polarity. To replace the battery, proceed as shown below.



⚠ Batteries contain polluting substances: do not dispose of them together with common waste but use the methods set forth in the local regulations.