



# Albatros

INNOVATIVE  
BI-FOLDING  
GATE SYSTEM





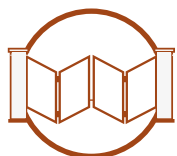


PATENT  
PENDING

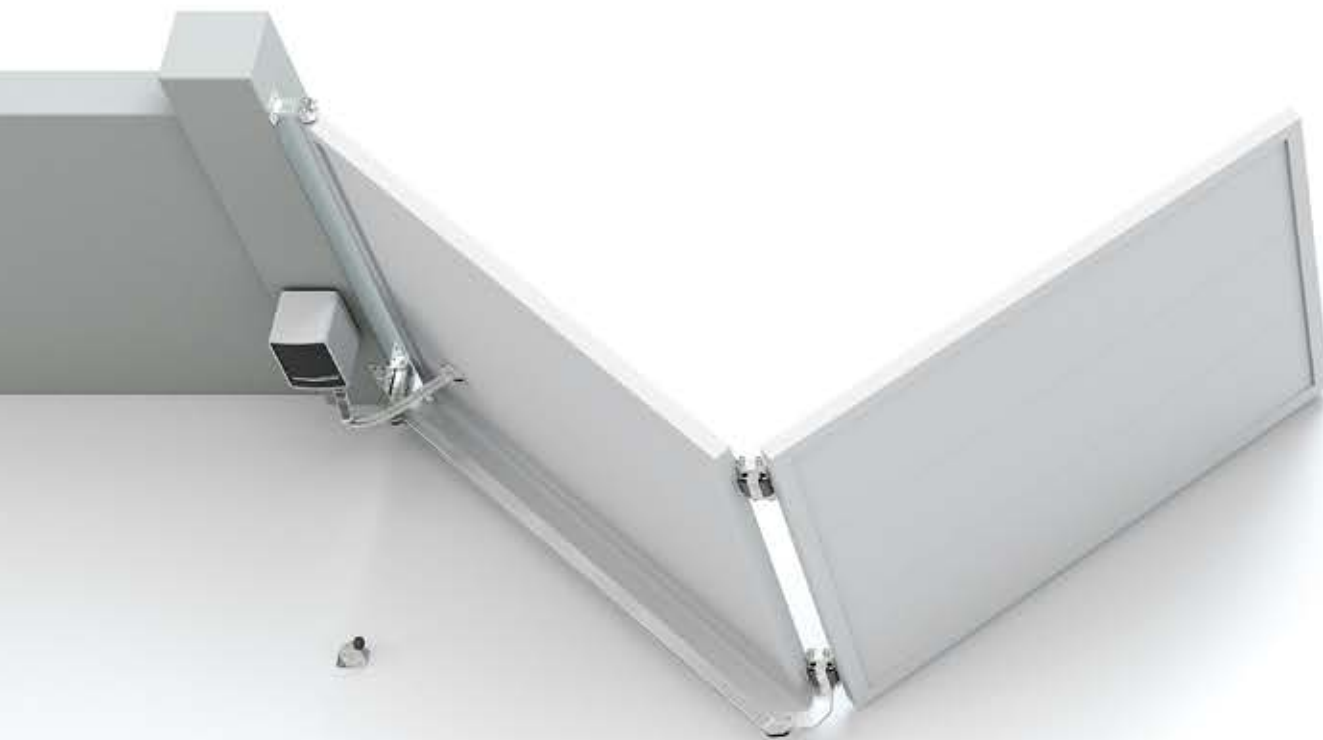
# Albatros

An innovative bi-folding  
swing gate system offering  
maximum opening in  
confined spaces.

# The Albatros bi-folding gate system



- Bi-folding wide opening swing gate system
- For double gates up to 16 metres wide
- Geared hinges for smooth opening
- Fold system occupies minimal space for opening and closing
- Trackless obstacle free entranceway



## Albatros Kit elemets



Code

ABS-100P

ABS-100G

## Strike plate



Code

ABS-15G

With its patented revolutionary geared hinge the Albatros system offers a stable smooth opening for the biggest of bi-folding systems. This high quality precise system remains totally suspended and therefore trackless, allowing a clean obstacle free entranceway and occupying half the space of a single leaf swing gate. The Albatros bi-folding power transmission arm is mounted on the underside of the first gate leaf and is connected to the lower geared hinge ensuring a space effective wide opening system.



Upper hinge



Code

85L

85PST

85W

Bottom hinge



Code

87W

87PST

87L

Runaway stop

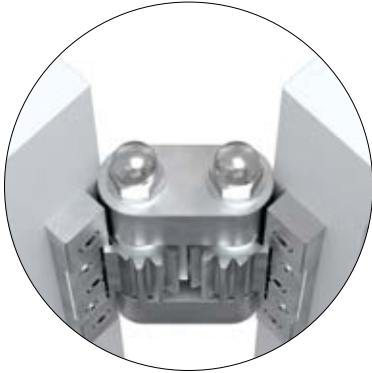


Code

300507B

## Upper geared hinge

Pin with integrated gear mechanism



Anti-crushing rubber stop

Flexi safety protection

## Lower geared hinge with power transmission arm

Pin with integrated gear mechanism

power transmission arm

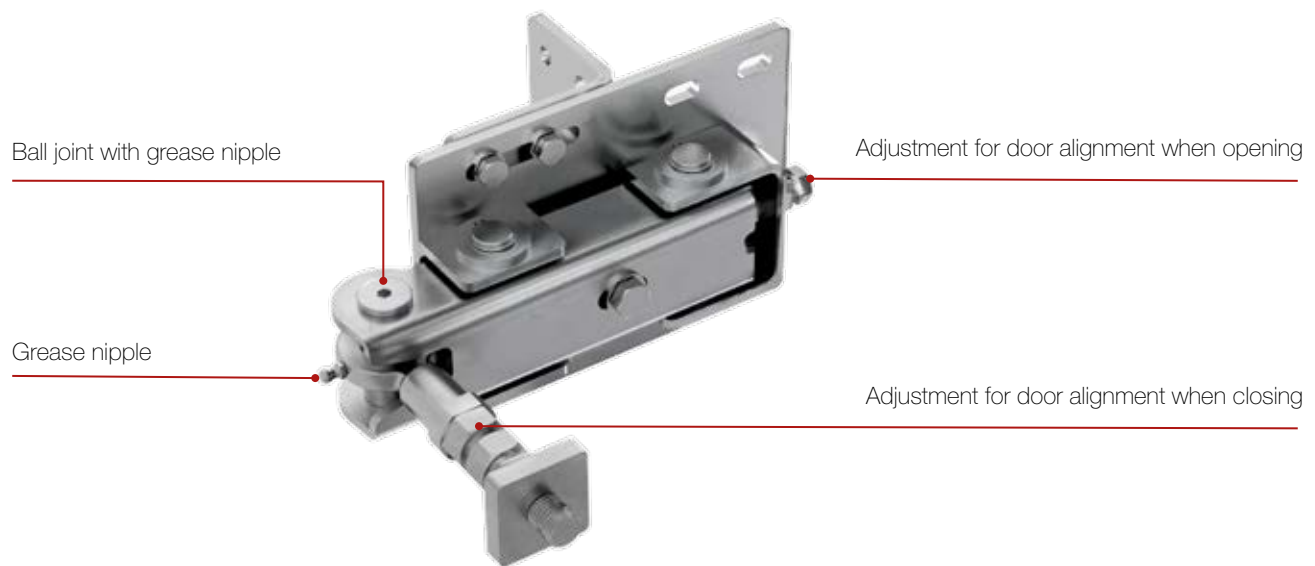
Joint with bearing



Anti-crushing rubber stop

Flexi safety protection

## Adjustable bracket

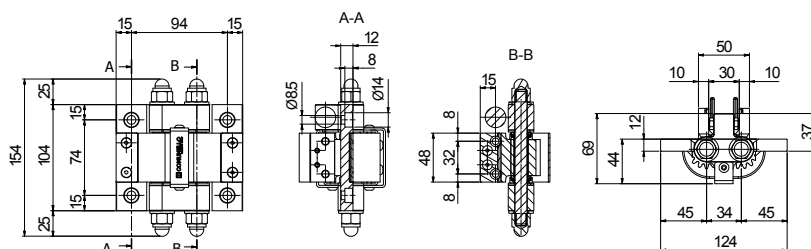


### FEATURES

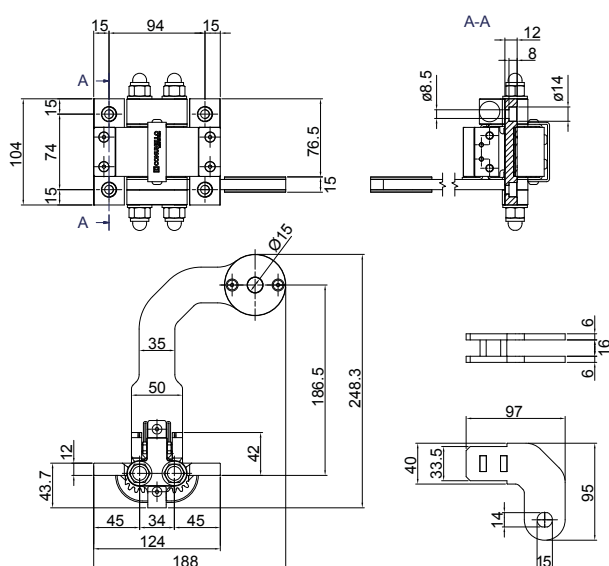
- ABS-100 is an ambidextrous kit
- The hinges with integrated mechanical gear ensure precise and stable transmission over time
- The kit is made of high quality materials particularly resistant to wear
- The mechanism with bearings and spherical joints significantly reduces friction and makes movement fluid
- The alignment of the leaves and the movement of the gate are easily adjustable by intervening directly on the bracket fixed to the pillar

Ambidextrous Albatros Kit including 2 hinges and movement system

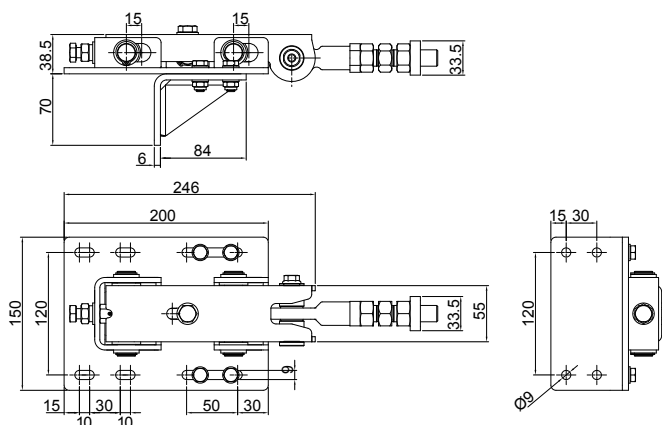
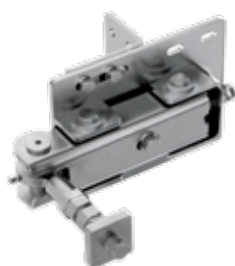
1



2



3



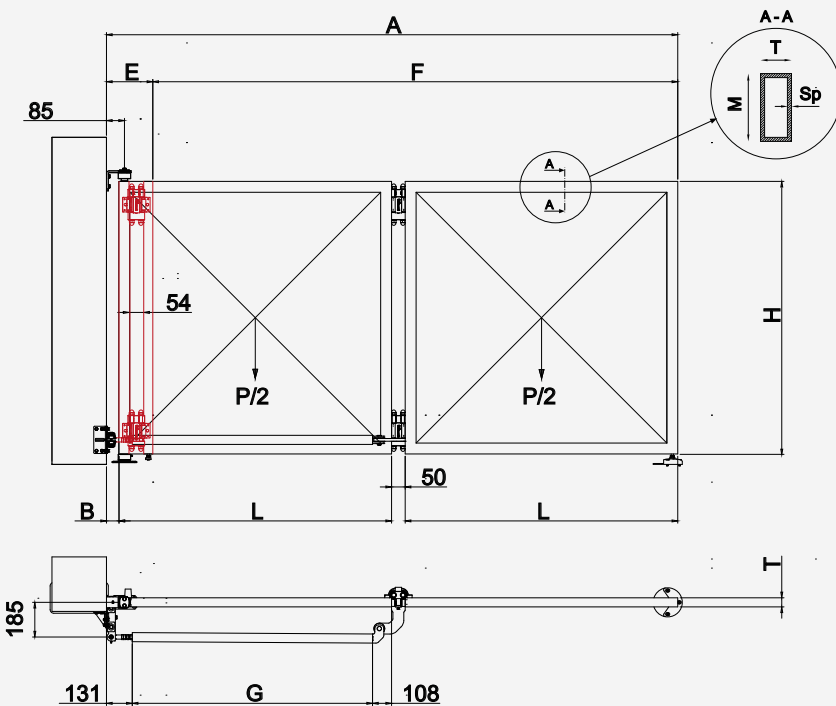
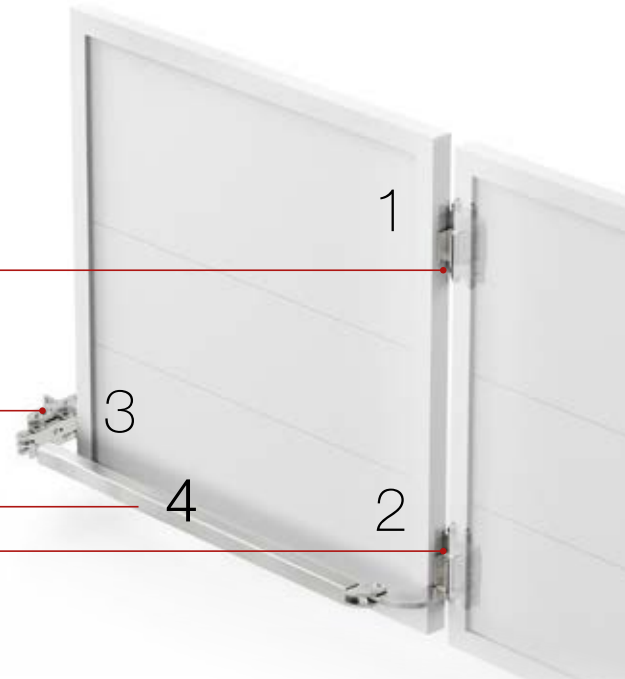
For leaves up to 4 m (quote A), A/H max = 3

Upper geared hinge

Adjustable bracket

On Piccolo model the connecting 40x40x3mm tube supplied by Gate Fabricator

Lower geared hinge with power transmission arm



#### GATE SYSTEM SIZING

$E = 2 \cdot T + B + 54$	OPEN GATE LEAF DIMENSIONS
$F = A - E$	NET OPENING SIZE WITH GATE OPEN
$G = L - 239 + B$	LEVER TUBE LENGTH
$L = (A - 50 - B) \div 2$	LEAF LENGTH
A	OPENING LENGTH
$B = 85 - (T/2)$	DISTANCE FROM THE LEAF TO COLUMN
T	LEAF TUBE SIZE

As indicated in the table, we recommend the use of tubular steel dimensions as to make the structure sufficiently rigid and avoid bending of the doors during the opening and closing phases. It is also advisable to limit the weight of the gate as much as possible. The choice of the tubular may vary depending on the shape of the doors and of the materials used.

For weights (P) over 200 kg, contact COMUNELLO SERVICE DPT

A [mm]	P/2 max [kg]	TUBULAR SIZE MxTxSp [mm] * *
1500	100	80x50x3 75x50x3
2000	100	80x50x3 75x50x3
2500	100	80x50x3 75x50x3
3000	100	80x50x3 75x50x3
3500	100	100x50x3 150x50x3
4000	100	120x50x3 150x50x3

\* Material standard ISO 10799-2 and ISO 12633-2



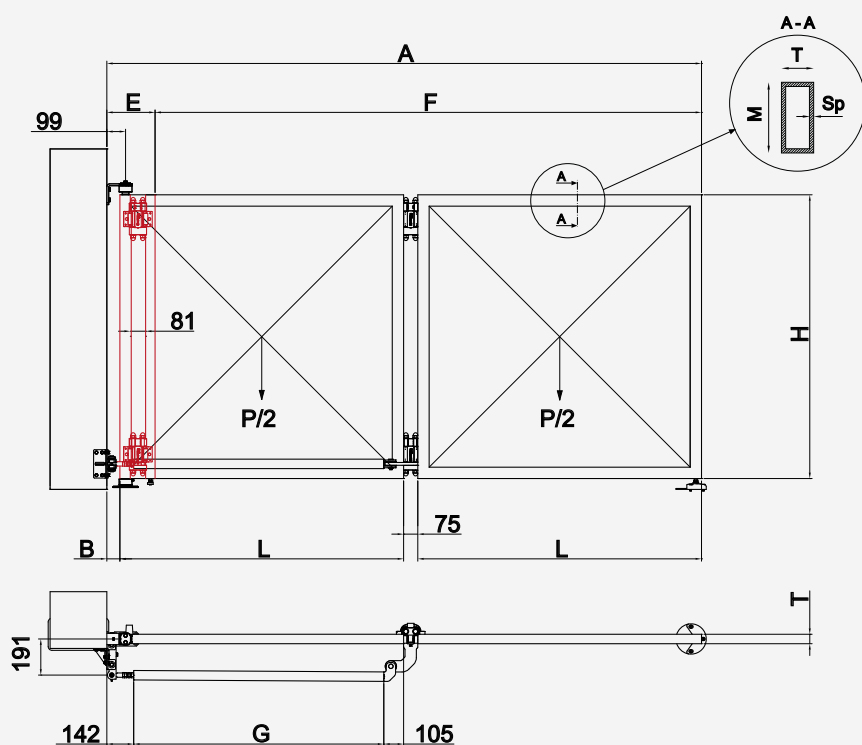
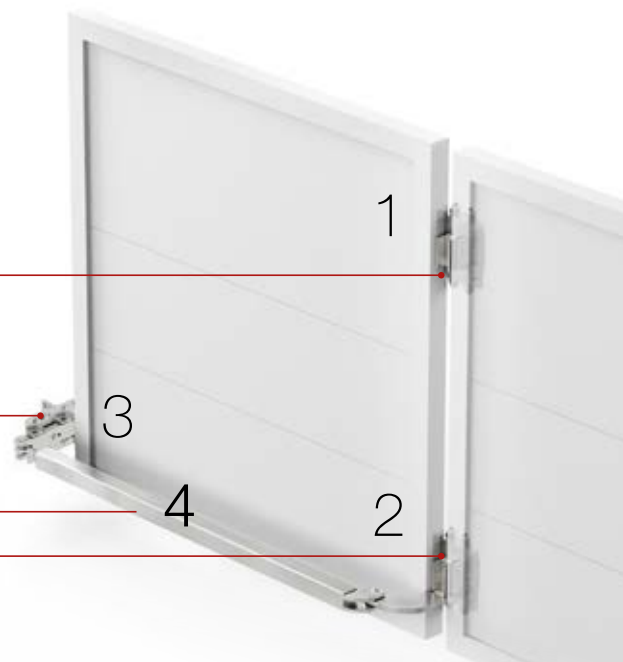
For leaves up to 8 m (quote A), A/H max = 3

Upper geared hinge

Adjustable bracket

On Grande model the connecting tube (50 x 50 x 3mm) is supplied by Fabricator

Lower geared hinge with power transmission arm



### GATE SYSTEM SIZING

$E = 2 \cdot T + B + 81$	OPEN GATE LEAF DIMENSIONS
$F = A - E$	NET OPENING SIZE WITH GATE OPEN
$G = L - 247 + B$	LEVER TUBE LENGTH
$L = (A - 75 - B) \div 2$	LEAF LENGTH
A	OPENING LENGTH
$B = 99 - (T/2)$	DISTANCE FROM THE LEAF TO COLUMN
T	LEAF TUBE SIZE

As indicated in the table, we recommend the use of tubular steel of such dimensions as to make the structure sufficiently rigid and avoid bending of the doors during the opening and closing phases. It is also advisable to limit the weight of the gate as much as possible. The choice of the tubular may vary depending on the shape of the doors and of the materials used.

For lengths (A) over 4 m or weights (P) over 300 kg, contact COMUNELLO SERVICE DPT

A [mm]	P/2 max [kg]	TUBULAR SIZE MxTxSp [mm] *
1500	150	80x60x3 65x65x3
2000	150	80x60x3 65x65x3
2500	150	80x60x3 75x50x3
3000	150	100x60x3 150x50x3
3500	150	140x60x3 150x50x3
4000	150	140x60x3 150x50x3

\* Material standard ISO 10799-2 and ISO 12633-2

# Albatros accessories

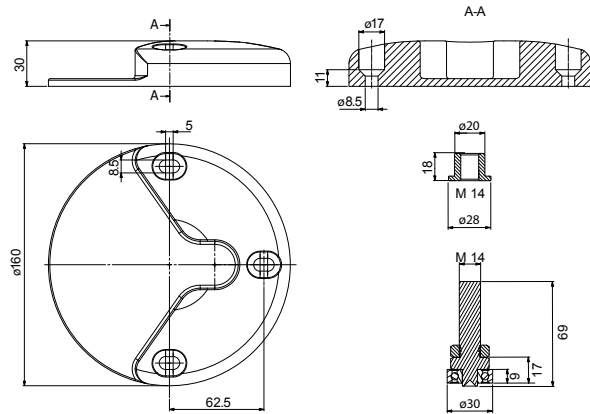
## ABS-15

Kit turned floor strike plate



CODE	Size	Box info	
		Pcs per pack	Kg
ABS-15G	D160 H=30	1	1.4

Finishing: Galvanized



# Compatible accessories

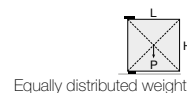
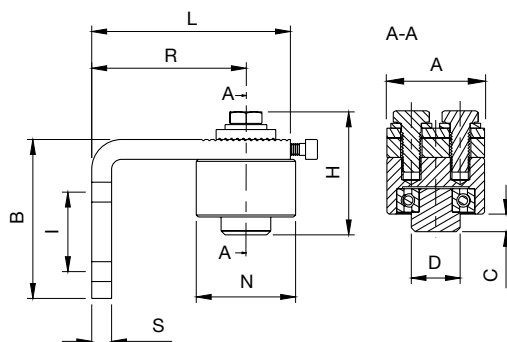
## 85L

Adjustable upper hinge with L plate

CODE	Size	A	B	C	D	H	I	L	N	R	S	Capacity	Box info	
													Pcs per pack	Kg
<b>85L-M</b>	Medio Ø50	50	90	9	Ø25	62	45	100	Ø48	70-85	10	350 kg	2	2.4
<b>85L-G</b>	Grande Ø70	60	110	15	Ø35	72	55	130	Ø68	90-105	10	500 kg	2	4.1

**Finishing:** Galvanized

Weight bearing capacity refers to a pair of hinges mounted on a gate with weight uniformly distributed on a leaf with proportions L=H.



Equally distributed weight

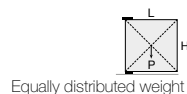
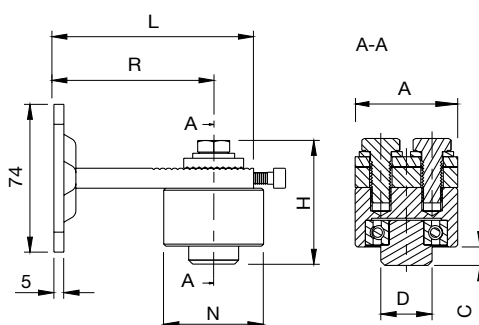
## 85PST

Adjustable upper hinge with plate to be screwed

CODE	Size	A	C	D	H	L	N	R	Capacity	Box info	
										Pcs per pack	Kg
<b>85PST-M</b>	Medio Ø50	50	9	Ø25	62	100	Ø48	70-85	350 kg	2	2.3
<b>85PST-G</b>	Grande Ø70	60	15	Ø35	72	130	Ø68	90-105	500 kg	2	3.2

**Finishing:** Galvanized

Weight bearing capacity refers to a pair of hinges mounted on a gate with weight uniformly distributed on a leaf with proportions L=H.



Equally distributed weight

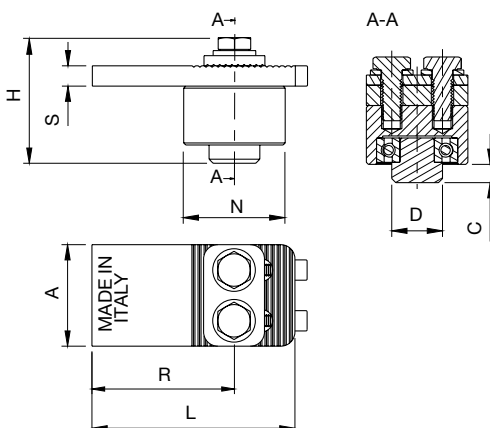
## 85W

Adjustable upper hinge with plate to be welded

CODE	Size	A	C	D	H	L	N	R	S	Capacity	Box info	
											Pcs per pack	Kg
<b>85M</b>	Medio Ø50	50	9	Ø25	62	100	Ø48	70-85	10	450 kg	4	3.4
<b>85G</b>	Grande Ø70	60	15	Ø35	72	130	Ø68	90-105	10	650 kg	2	3.2

**Finishing:** Galvanized

Weight bearing capacity refers to a pair of hinges mounted on a gate with weight uniformly distributed on a leaf with proportions L=H.

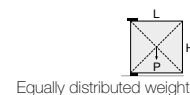
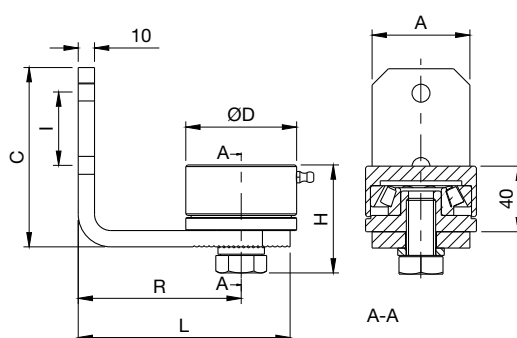


Equally distributed weight

# Compatible accessories

## 87L

Bottom hinge with thrust bearing and L plate



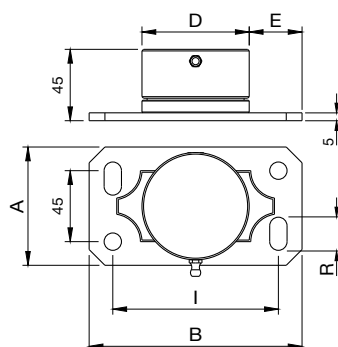
CODE	Size	A	C	D	H	I	L	R	Capacity	Box info	
										Pcs per pack	Kg
87L-M	Medio Ø50	45	90	Ø 49	52	40	100	55-85	350 kg	4	4.0
87L-G	Grande Ø70	60	110	Ø 68	66	55	130	95-105	500 kg	2	4.2

Finishing: Galvanized

Weight bearing capacity refers to a pair of hinges mounted on a gate with weight uniformly distributed on a leaf with proportions L=H.

## 87PST

Bottom hinge with thrust bearing and plate



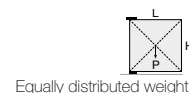
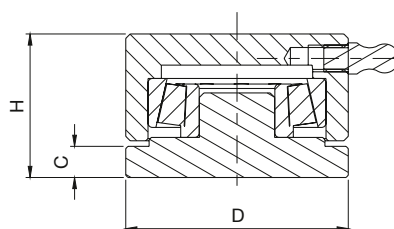
CODE	Size	A	B	D	E	I	R	Portata Capacity	Box info	
									Pcs per pack	Kg
87PST-M	Medio Ø 50	75	100	Ø 49	25	70	10	350 kg	2	1.2
87PST-G	Grande Ø 70	75	135	Ø 68	33.5	105	10	500 kg	2	2.5

Finishing: Galvanized

Weight bearing capacity refers to a pair of hinges mounted on a gate with weight uniformly distributed on a leaf with proportions L=H.

## 87w

Bottom hinge with thrust bearing



CODE	Size	C	D	H	Capacity	Box info	
						Pcs per pack	Kg
87G	Grande Ø70	8	Ø68	40	650 kg	2	2.0

Finishing: Galvanized

Weight bearing capacity refers to a pair of hinges mounted on a gate with weight uniformly distributed on a leaf with proportions L=H.

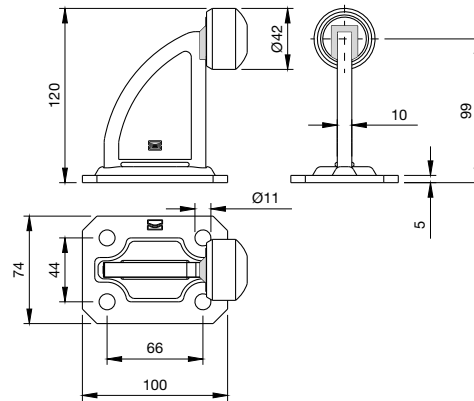
# 300507B

Runaway stop



CODE	Box info	
	Pcs per pack	Kg
300507B	10	7.4

Finishing: Galvanized



# Gate innovation made in Comunello

